

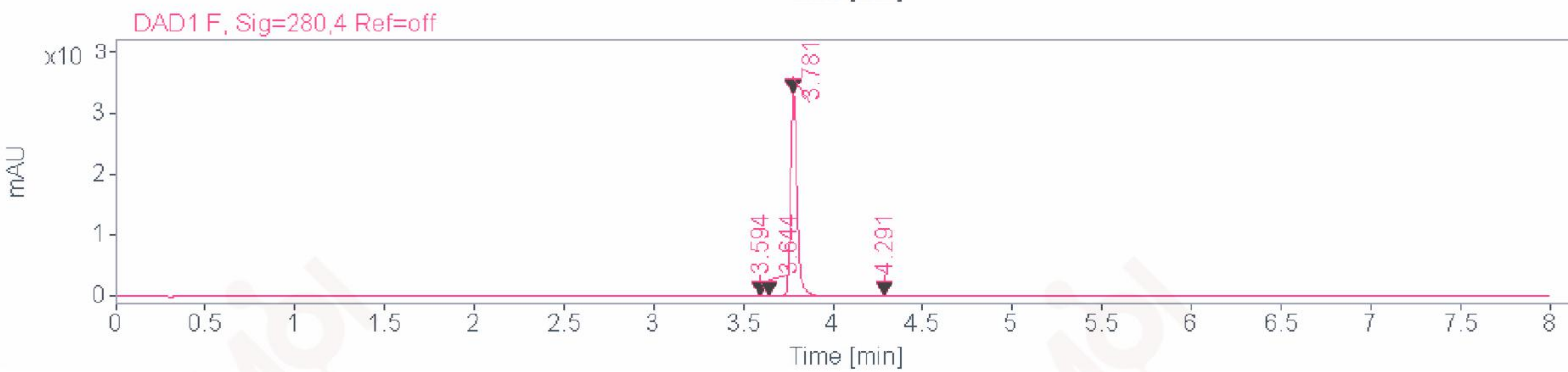
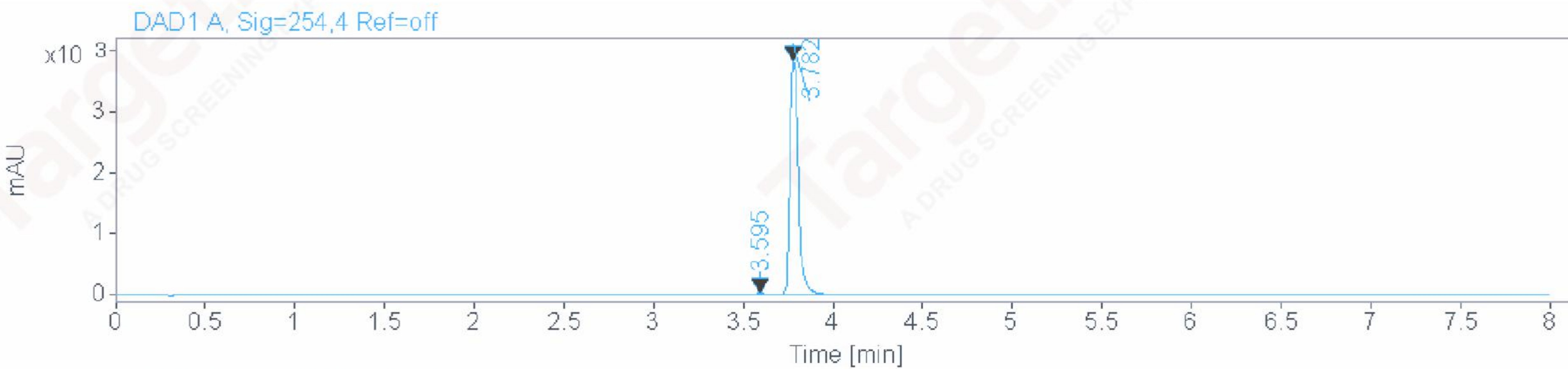
Area Percent Report



Agilent Technologies

Data file: E:\HPLC\DATA\TEST\0CJK0 A021-01-20 16-57-30\004-P1-E3-14656717-26-20.D
Sample name: 146567
Instrument: 2DLC **Sample type:** Sample
Location: P1-E3
Acq. method: F0.6 254nm.M **Injection:** 1 of 1
Analysis method: F0.6 254nm.M **Injection volume:** 1.000

FLOW RATE : 0.6ml/min
 COLUMN : ACE C18 50*2.1 2um
 COLUMN TEMPERATURE : 30
 GRADIENT PROGRAMME :
 TIME(MIN) MOBILE PHASE-A(H2O+0.1TFA) MOBILE PHASE-B(CH3CN+0.1TFA)
 0 90% 10%
 6 0% 100%
 8 0% 100%



Signal: DAD1 A, Sig=254,4 Ref=off

RT [min]	Type	Width [min]	Area	Height	Area%	Name
3.595	BV	0.0476	97.6152	30.2525	0.7580	
3.782	VV R	0.0530	12779.7246	3819.6035	99.2420	
Sum			12877.3398			

Signal: DAD1 F, Sig=280,4 Ref=off

RT [min]	Type	Width [min]	Area	Height	Area%	Name
3.594	BV E	0.0324	30.5883	14.5994	0.3517	
3.644	VV E	0.0371	26.6718	10.6856	0.3066	
3.781	VV R	0.0404	8635.7480	3319.5447	99.2807	
4.291	BB	0.0345	5.3089	2.4290	0.0610	
Sum			8698.3170			